

STALWART

Inverted Biological Microscope STM-2090



STM-2090

Introduction

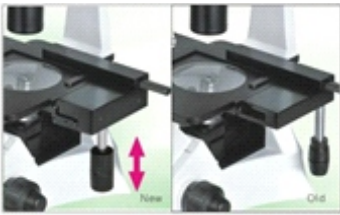
STM-2090 Inverted Biological Microscope is a high level microscope which is specially designed for medical and health units, universities, research institutes to observe cultured living cells. With an innovative optical and structure design idea, excellent optical performance and easy to operate system, this inverted biological microscope makes your work enjoyable.

Features

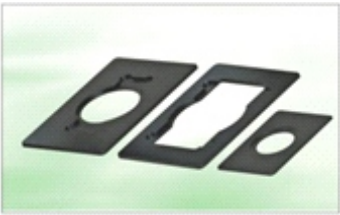
- Excellent optical function with infinite optical system
- Innovative stand structure, sharp image display, convenient and special for viewing incubating cell tissue



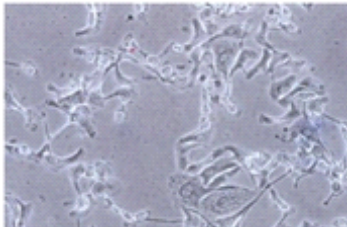
With LWD Infinite Plan Objective, Making Viewing Field Flatter and Brighter, Contrast Sharper, Living Cell Observing easier



Advanced and Reliable Mechanical Stage with Knob Height and Accuracy Adjustable



Different Holders for Various Observations



With pre-centerable Phase Annulus, Available to observe Low Contrast or Transparent Specimens

Specification

Item	Specification	STM-2090	
Optical System	Infinite Optical System	Standard	
Viewing Head	Trinocular Head, Inclined at 30°, Interpupillary Distance 48-75mm	Standard	
Eyepiece	High-point, Extra Wide Field Eyepiece EW10×/ 22mm	Standard	
Objective	LWD(Long Working Distance) Infinite Plan Objective	4×/ 0.1, WD 17.3mm	Standard
		10×/ 0.25, WD 10mm	Optional
		20×/ 0.4, WD 5.1mm	Optional
		40×/ 0.6, WD 2.1mm	Standard
	Infinite Plan Phase Objective	PH10×/ 0.25, WD 10 mm	Standard
		PH20×/ 0.4, WD 5.1mm	Standard
PH40×/ 0.6, WD 2.1m		Optional	
Nosepiece	Quintuple Nosepiece	Standard	
Condenser	ELWD(Extra Long Working Distance) Condenser NA 0.3, LWD 72mm (Without Condenser the WD can be 150mm)	Standard	
Centering	Centering Telescope (Φ30mm)	Optional	
Phase Annulus	10×-20×, 40× Phase Annulus Plate (Fixed)	Standard	
	10×-20×, 40× Phase Annulus Plate (Adjustable)	Optional	
Stage	Plain Stage 160×250mm	Standard	
	Glass Insert	Standard	
	Attachable Mechanical Stage, X-Y Coaxial Control, Moving Rang 120mm×78mm	Optional	
	Auxiliary Stages 70mm×180mm	Standard	
	Terasaki Holder	Optional	
	Petri Dish Holder Φ35mm	Optional	
	Slide Glass Holder Φ54mm	Optional	
	Petri Dish Holder Φ90mm	Optional	
Focusing	Coaxial Coarse and Fine Adjustment, Fine Division 0.002mm, Coarse Stroke 37.7mm per Rotation, Fine Stroke 0.2mm per Rotation, Moving Range up 8mm, down 3mm	Standard	
Illumination	6V/30W Halogen Lamp	Standard	
	3W LED	Optional	
Filter	Blue, Green and Frosted filters, Diameter 45mm	Standard	
Accessories	Photo Adapter for Nikon and Canon DSLR cameras	Optional	
	Video Adapter 1× / 0.5× C-mount	Optional	
	Inverted Fluorescent Attachment FI-100	Optional	
Package	1carton/set, 46.5cm*39.5cm*64cm, 16kg	Standard	

Application

STM-2090 Inverted microscope is used by medical and health units, universities, research institutes for observations of micro-organisms, cells, bacteria and tissue cultivation. It can be used for continuous observation of process of cells, bacteria grow and divide in the culture medium. Videos and images can be taken during the process. This microscope is widely used in cytology, parasitology, oncology, immunology, genetic engineering, industrial microbiology, botany and other fields.

Sample Pictures

