

STALWART

Biological Microscope STM-2052 Series



STM-2052A



STM-2052B

Introduction

STM-2052 series microscopes are classical biological microscopes with ingenious stand, high definition optical system, sharp image and comfortable operation, which make your work much enjoyable.

Features

- High contrast and sharp image with high quality optical system.
- Low environment requirement with Anti-mould technology.
- Comfortable operation with low position coarse and fine adjustment knob.
- ECO function is optional, automatically turn off after 15 mins of no use.
- With cord rest on the back, making the working table clean and tidy.

Specification

Item	Specification	STM-2052A	STM-2052B
Optical System	Finite Optical System	Standard	
	Infinite Optical System		Standard
Eyepiece	WF10×/18mm	Standard	
	WF10×/20mm		Standard
Viewing Head	Monocular Head, inclined at 30°	Optional	
	Seidentopf Binocular Head, inclined at 30°, Interpupillary 47-78mm	Standard	Standard
	Seidentopf Trinocular Head, inclined at 30°, Interpupillary 47-78mm	Optional	Optional
	Digital Binocular Head with built-in camera, Inclined at 30°, Interpupillary Distance 47-78mm, 5.0MP, Support Wifi	Optional	Optional
	Digital Binocular Head with Tablet camera, Inclined at 30°, Interpupillary Distance 47-78mm, 5.0MP, 8" LCD, Android OS	Optional	Optional
Objective	Finite Achromatic Objectives 4×, 10×, 40×, 100×	Standard	
	Finite Achromatic Objectives 20×, 60×	Optional	
	Finite Semi-Plan Achromatic Objectives 2×, 4×, 10×, 20×, 40×, 60×, 100×	Optional	
	Finite Plan Achromatic Objectives 4×, 10×, 20×, 40×, 60×, 100×	Optional	
	Infinite Semi-Plan Achromatic Objectives 4×, 10×, 40×, 100×		Standard
	Infinite Plan Achromatic Objectives 2×, 4×, 10×, 20×, 40×, 60×, 100×		Optional
	Infinite Plan Fluorescent Objective 4×, 10×, 20×, 40×, 100×		Optional

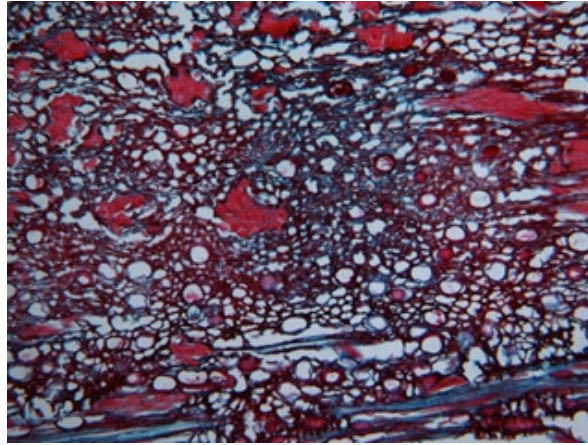
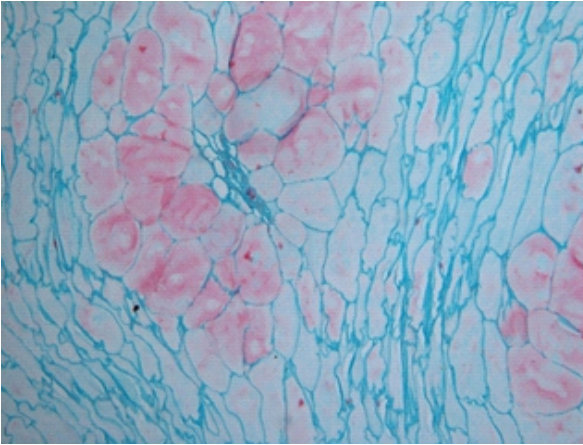
Specification

Nosepiece	Backward Quadruple Nosepiece	Standard	Standard
	Backward Quintuple Nosepiece	Optional	Optional
Stage	Double Layers Mechanical Stage 140mm×140mm, Moving Range 75mm×50mm	Standard	
	Rackless Double Layers Mechanical Stage 150mm×139mm, Moving Range 75mm×52mm		Standard
Condenser	Abbe Condenser NA1.25	Standard	Standard
	Dark Field Condenser (Dry / Oil)	Optional	Optional
Focusing	Coaxial Coarse and Fine Adjustment, Fine Division 0.002mm, Moving Range 25mm	Standard	Standard
Illumination	S-LED Illumination, Brightness Adjustable	Standard	Standard
	S-LED Illumination with Rechargeable Battery, Brightness Adjustable	Optional	Optional
	6V/20W Halogen Lamp, Brightness Adjustable	Optional	Optional
	Kohler Illumination	Optional	Optional
	ECO Function, automatically turn off after 15 mins of no use	Optional	Optional
	Plane-concave Mirror	Optional	Optional
Optional accessories	Phase Contrast Kit	Optional	Optional
	Polarizing Set	Optional	Optional
	FL-LED Epi-fluorescent Attachment		Optional
Package	1pc/carton, 36*26*46mm, gross weight: 8kg	Standard	Standard

Application

STM-2052 series microscopes are ideal instruments in biological, pathological, histological, bacterial, immune, pharmacological and genetic fields. They can be widely used in medical and sanitary establishments, such as hospitals, clinics, laboratories, medical academies, colleges, universities and related research centers.

Sample Pictures



Dimension

