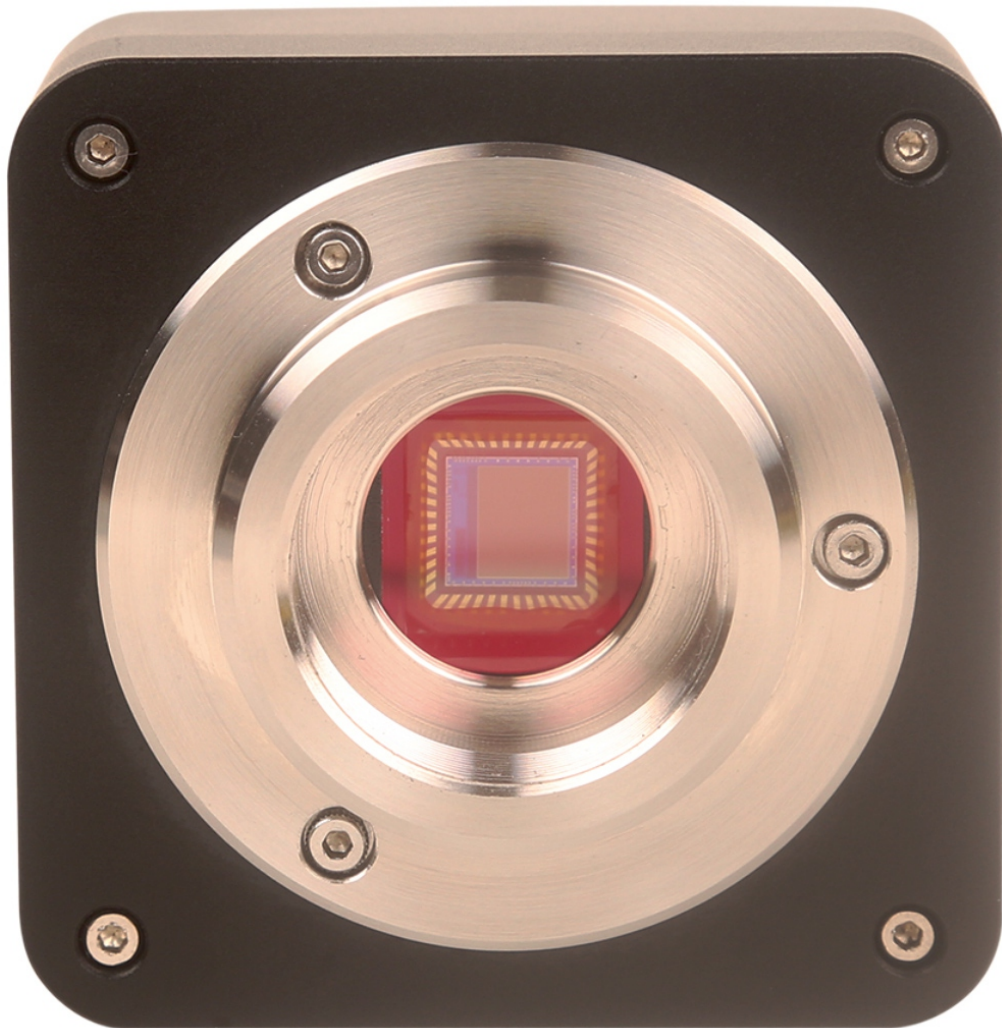


STALWART

CCD Color Microscope Digital Camera STC4D Series



STC4D-Series

Introduction

STC4D series CCD digital cameras adopt Sony ExView HAD(Hole-Accumulation-Diode) CCD sensor as the image-capture device. Sony ExView HAD CCD is a CCD that drastically improves light efficiency by including near infrared light region as a basic structure of HAD sensor. USB2.0 port is used as the data transfer interface. STC4D series cameras come with advanced video & image processing software ImageView; Providing Windows/Linux/OSX multiple platform SDK; Native C/C++, C#/VB.NET, DirectShow, Twain Control API; STC4D series cameras can be widely used in low light environment and microscope fluorescence image capture and analysis

Features

- Standard C-Mount camera with SONY ExView 0.3M~1.4M sensors;
- USB2.0 interface ensuring high speed data transmission;
- Ultra-Fine color engine with perfect color reproduction capability;
- With advanced video & image processing application ImageView;
- Providing Windows/Linux/Mac OS multiple platforms SDK;
- Native C/C++, C#/VB.NET, DirectShow, Twain Control API.

Specification

Item	STC4D-140C	STC4D-140M	STC4D-44M	STC4D-30M
Sensor & Size(mm)	1.4M/ICX285AQ 2/3" (10.2x8.3)	1.4M/ICX285AL(M) 2/3" (10.2x8.3)	0.44M/ICX829AL (M)1/2"(7.40X5.95)	0.3M ICX618AL(M) 1/4" (4.46x3.80)
Pixel size(μm)	6.45x6.45	6.45x6.45	8.6X8.3	5.6x5.6
G Sensitivity	1240mv with 1/30s	1300mv with 1/30s	2800mv with 1/30s	1200mv with 1/30s
Dark Signal	10mv with 1/30s	11mv with 1/30s	2mv with 1/30s	4mv with 1/30s
FPS/Resolution	15@1360x1024	15@1360x1024	46@748X578	72@640x480
Binning	1x1	1x1	1X1	1x1
Exposure	0.12ms~240s	0.12ms~240s	0.20ms~3600s	0.06ms~40s

Other Specification for STC4D Camera

Spectral Range	380-650nm (with IR-cut Filter)
White Balance	ROI White Balance/ Manual Temp Tint Adjustment /NA for Monochromatic Sensor
Color Technique	Ultra-Fine™ Color Engine /NA for Monochromatic Sensor
Capture/Control API	Native C/C++, C#/VB.NET, DirectShow, Twain and Labview
Recording System	Still Picture and Movie
Cooling System	Natural

Operating Environment	
Operating Temperature(in Centigrade)	-10~ 50
Storage Temperature(in Centigrade)	-20~ 60
Operating Humidity	30~80%RH
Storage Humidity	10~60%RH
Power Supply	DC 5V over PC USB Port
Software	
Operating System	Microsoft® Windows® XP / Vista / 7 / 8 /10 (32 & 64 bit) OSx(Mac OS X) Linux
PC Requirements	CPU: Equal to Intel Core2 2.8GHz or Higher
	Memory:2GB or More
	USB Port:USB2.0 High-speed Port
	Display:17" or Larger
	CD-ROM

Dimension

The STC4D body, made from tough, zinc alloy, ensures a heavy duty, workhorse solution. The camera is designed with a high quality IR-CUT to protect the camera sensor. No moving parts included. These measures ensure a rugged, robust solution with an increased lifespan when compared to other industrial camera solutions.