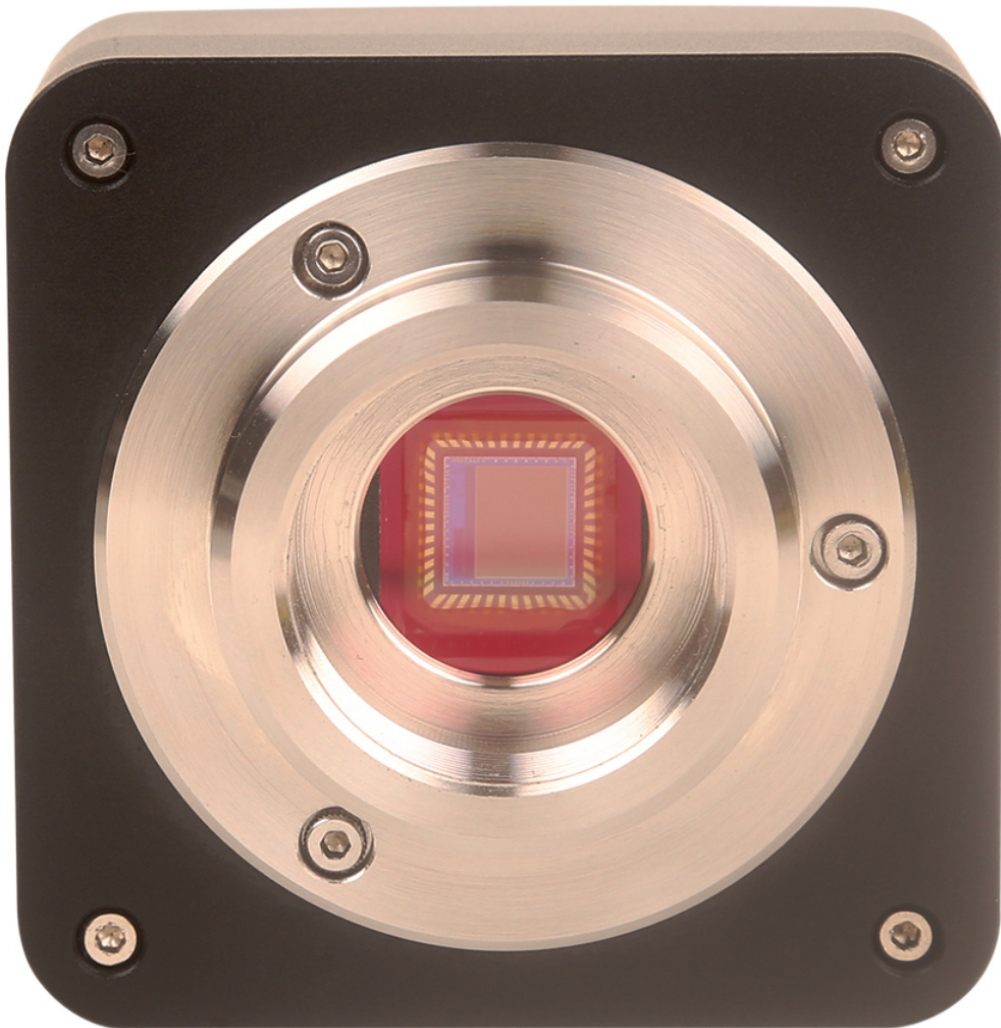


STALWART

CMOS Color Microscope Digital Camera STC4C Series



STC4C-Series

Introduction

STC4C series CCD cameras are ultra-high performance Super HAD CCD camera. The cameras adopt Sony Super HAD CCD sensor as the image capture device; The Super HAD CCD is a version of Sony's high performance CCD HAD (Hole-Accumulation Diode) sensor with sharply improved sensitivity by the incorporation of a new semiconductor technology developed by Sony Corporation. USB2.0 is used as the data transfer interface.

STC4C series CCD cameras come with advanced video & image processing application ImageView; Providing Windows/Linux/OSX multiple platform SDK; Native C/C++, C#/VB.NET, DirectShow, Twain Control API; The STC4C series CCD cameras can be widely used in bright field, dark field, fluorescent light environment for microscope image capture and analysis.

Features

- Standard C-Mount camera with SONY Super HAD CCD 0.8~5.2M sensor;
- USB2.0 interface ensuring high speed data transmission;
- Ultra-Fine color engine with perfect color reproduction capability;
- With advanced video & image processing application ImageView;
- Providing Windows/Linux/Mac OS multiple platforms SDK;
- Native C/C++, C#/VB.NET, DirectShow, Twain Control API.

Specification

Item	STC4C-520C	STC4C-510C	STC4C-500C	STC4C-200C
Sensor & Size(mm)	5.2M/ICX655AQ(C) 2/3" (8.44x7.07)	5.1M/ICX452AQ© 1/1.8" (7.19x5.39)	5.0M/ICX282AQ© 2/3" (8.70x6.53)	2.0M/ICX274AQ© 1/1.8" (7.04x5.28)
Pixel size(µm)	3.45x3.45	2.775x2.775	3.40x3.40	4.40x4.40
G Sensitivity	420mv with 1/30s	260mv with 1/30s	280mv with 1/30s	420mv with 1/30s
Dark Signal	4mv with 1/30s	16mv with 1/30s	16mv with 1/30s	8mv with 1/30s
FPS/Resolution	4.3@2448x2050 10.5@960x720	4@2592x1944 35@560x420	4.5@2560x1920 9@1280x960	10@1600x1200
Binning	1x1	1x1, 2x2	1x1, 2x2	1x1
Exposure	0.22ms~60s	0.212ms~77ms	0.203ms~60s	0.135ms~60s

Specification

Item	STC4C-140BC	STC4C-140M
Sensor & Size(mm)	1.4M/ICX205AK© 1/2" (6.32x4.76)	1.4M/ICX205AL(M) 1/2" (6.32x4.76)
Pixel size(µm)	4.65x4.65	4.65x4.65
G Sensitivity Dark Signal	400mv with 1/30s	450mv with 1/30s
FPS/Resolution	16mv with 1/30s 15@1360x1024	16mv with 1/30s 15@1360x1024
Binning	1x1	1x1
Exposure	0.127ms~60s	0.127ms~60s

Other Specification for STC4C Camera

Spectral Range	380-650nm (with IR-cut Filter)
White Balance	ROI White Balance/ Manual Temp Tint Adjustment/NA for Monochromatic Sensor
Color Technique	Ultra-Fine™ Color Engine/NA for Monochromatic Sensor
Capture/Control API	Native C/C++, C#/VB.NET, DirectShow, Twain and Labview
Recording System	Still Picture and Movie
Cooling System	Natural

Operating Environment

Operating Temperature(in Centigrade)	-10~ 50
Storage Temperature(in Centigrade)	-20~ 60
Operating Humidity	30~80%RH
Storage Humidity	10~60%RH
Power Supply	DC 5V over PC USB Port

Software

Operating System	Microsoft® Windows® XP / Vista / 7 / 8 / 10 (32 & 64 bit) OSx(Mac OS X) Linux
PC Requirements	CPU: Equal to Intel Core2 2.8GHz or Higher
	Memory:2GB or More
	USB Port:USB2.0 High-speed Port
	Display:17" or Larger
	CD-ROM

Dimension

The STC4C body, made from tough, zinc alloy, ensures a heavy duty, workhorse solution. The camera is designed with a high quality IR-CUT to protect the camera sensor. No moving parts included. These measures ensure a rugged, robust solution with an increased lifespan when compared to other industrial camera solutions.