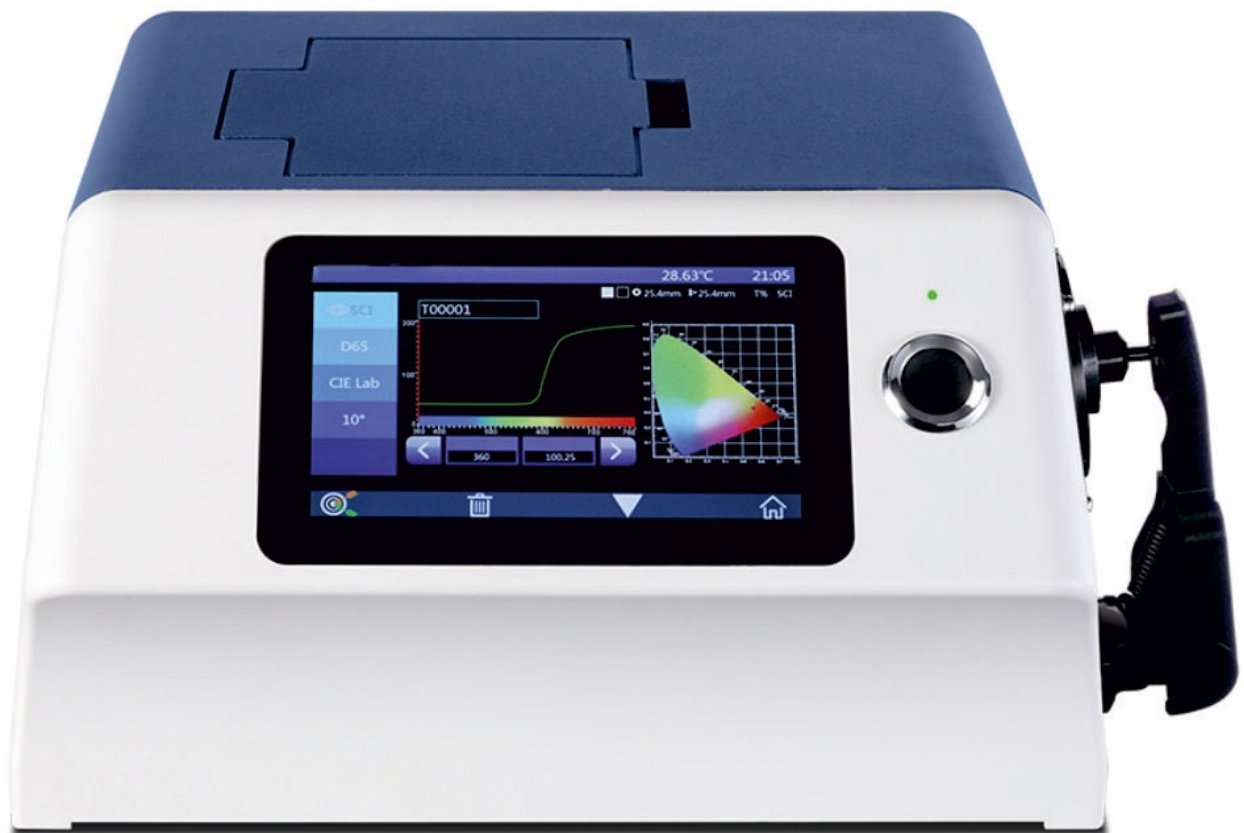


STALWART

Bencnchttop Grating Spectrophotometer ST-606



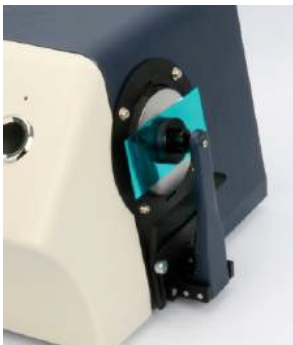
Introduction

ST-606 is a benchtop grating spectrophotometer which is developed by Stalwart independently with independent intellectual property. ST-606 has many features, like 7 inches TFT capacitive touch screen display, full illuminants, reflective d/8 and transmissive d/0 geometry(including or excluding UV). With very stable and precise color measurement, large storage and powerful PC software all makes ST-606 ideal for color analysis within R&D and laboratory environments.

Features

- High configuration of hardware: 7 inches TFT Color Capacitive Touch-screen Display; Bluetooth 2.1; Concave Grating.
- Double Array 256 Image Element CMOS Sensor; Long life-span stable LED, UV LED and xenon lamp.
- With reflective and transmissive spectrum, accurate Lab value, good to calculate color formula and do precise color transmission.
- Auto identify measuring aperture. Freely switchable between 4 measuring apertures: $\phi 25.4\text{mm}/15\text{mm}/8\text{mm}/4\text{mm}$. Users also can customize apertures.
- Built-in temperature sensor to monitor and compensate the measuring temperature to ensure the measurement more precision.
- Wavelength range 360nm – 780nm. Built-in 400nm cut off/420nm cut off/460nm cut off (only xenon lamp edition), more professional in UV measurement.
- Independent light source detector, continuously monitor the condition of light sources to ensure the light source reliable.
- Multiple measurement modes: Quality Management Mode, Sample Mode; Meet more users' requirement.
- Multiple accessories, sample holders, fixation clamp, suitable to more working condition.
- Big capacity data storage, for 40000 pieces test result.
- Built-in camera locating.
- More powerful extended functions at the PC software.

Product Highlights



Plastic Sample

Reflectance Measurement:
Adopt D/8° Geometry,



Transmissive Sample

Transmittance Measurement:
Adopt D/0° Geometry,



Measuring Aperture

Auto-identify the apertures,
25.4/15/8/4mm four aperture
freely switch. Special aperture
can be customised



Liquid, Powder, Solid Sample Measurement

360-780nm wide wavelength range measurement,
Professional UV sample measurement.

Specification

Item	ST-606
Optical Geometry	Reflectance: D/8(SCI&SCE; Include UV/Exclude UV) Transmittance: D/0(SCI&SCE; Include UV/Exclude UV)
Integrating Sphere Size	φ154mm
Light Source Device	360nm-780nm Combined LED Lamp, 400nm cut-off, UV Lamp
Sensor	256 Image Element Double Array CMOS Image Sensor
Wavelength Pitch	10nm
Semiband Width	10nm
Reflection Range	0~200%
Measuring Aperture	Reflective: φ30mm/φ25.4mm, φ18mm/φ15mm, φ10mm/φ8mm, φ6mm/φ4mm; Transmissive: φ30mm/φ25.4mm
Specular Component	Reflectance: SCI&SCE Transmittance: SCI&SCE
Color Space	CIE LAB, XYZ, Yxy, LCh, CIE LUV, Musell, s-RGB, HunterLab, βxy, DIN
Color Difference Formula	ΔE ab, ΔEuv, ΔE 94, ΔE cmc(2:1), ΔE(1:1), ΔE00, DINΔE99, ΔE(Hunter)
Observer Angle	2° & 10°
Illuminants	D65A,c,D50,D55,D75,F1,F2,F3,F4,F5,F6,F7,F8,F9,F10,F11,F12
Display Data	Spectrogram/Values, Chromaticity Values, Color Difference Values /Graph, Pass/Fail Result, Color Offset

Repeatability	Spectral reflectance: Φ 25.4mm/SCI, Standard deviation within 0.04% (400 nm to 700 nm: within 0.04%) Chromaticity value: Φ 25.4mm/SCI, Standard deviation within ΔE^*ab 0.01 Spectral Transmittance: Φ 25.4mm/SCI, Standard deviation within 0.05% (400 nm to 700 nm: within 0.04%) Chromaticity value: Φ 25.4mm/SCI, Standard deviation within ΔE^*ab 0.02
Inter-instrument Error	Φ 25.4mm/SCI Within ΔE^*ab 0.12(Average for 12 BCRA Series II color tiles)
Size	370X300X200mm
Weight	9.6kg
Screen	7" TFT Capacitive Screen-touch Display
Data Port	USB & Bluetooth
Data Storage Capacity	Standard: 5000Pcs;Sample: 40000 Pcs.(One PCS can Include both SCI&SCE)
Working Environment	Temperature:0~40°C: Humidity:0~85%(No Condensation)
Storage Environment	Temperature:-20~50°C: Humidity:0~85%(No Condensation)

Application

ST-606 is a benchtop grating spectrophotometer which is developed by Stalwart independently with independent intellectual property. ST-606 has many features, like 7 inches TFT capacitive touch screen display, full illuminants, reflective d/8 and transmissive d/0 geometry(including or excluding UV). With very stable and precise color measurement, large storage and powerful PC software all makes ST-606 ideal for color analysis within R&D and laboratory environments.



Automobile



Leather



Plastic



Food



Laboratory



Paint