

STALWART

Mini Dry Bath SMD-100 Series



SMD-100D,I



SMD-100B,F,C

Introduction

Mini Dry Bath is a micro-processor controlled heating block with heater (heating types) or semiconductor refrigeration (cooling types) technology. It adapts onboard use, smart, light and convenient for movement, suit for any kind of occasions

Features

- Automatic fault detection function with buzzer alarm.
- Various of blocks for optional choice. Convenient for replacement. Easy cleaning and disinfection.
- 24V DC input power, built-in over-temperature protection device.
- Simultaneously display setting and actual time and temperature. Temperature calibration function.
- Unique designed. Smart and light, convenient movement, suit for various occasions.
- 100I series also have PCR hot cover technology, adding anti-evaporation function.
- The 100F uses fan cooling to reduces the temperature quickly.

Specification

| Item | SMD-100B | SMD-100C | SMD-100D | SMD-100F | SMD-100I |
|------------------------|-------------------------------|-------------------------------------------|-------------------------------------------|-------------------------------|-------------------------------|
| Temp. Control Range | R.T.+5°C~100°C | -10°C~100°C | -10°C~100°C | R.T.+5°C~100°C | R.T.+5°C~100°C |
| Temp. Max. Decrease | / | R.T. decreases 25°C @R.T. 26°C | R.T. decreases 25°C @R.T. 26°C | / | / |
| Temp. Setting Range | 0°C~100°C | -10°C~100°C | -10°C~100°C | 0°C~100°C | 0°C~100°C |
| Temp. Stability@100°C | ±0.5°C | ±0.5°C | ±0.5°C | ±0.5°C | ±0.5°C |
| Temp. Stability@40°C | ±0.3°C | ±0.3°C | ±0.3°C | ±0.3°C | ±0.3°C |
| Block Temp. Uniformity | ±0.3°C | ±0.3°C | ±0.3°C | ±0.3°C | ±0.3°C |
| Temp. Display Accuracy | 0.1°C | 0.1°C | 0.1°C | 0.1°C | 0.1°C |
| Heating Speed | ≤15min(20°C to 100°C) | ≤15min (20°C to 100°C) | ≤15min (20°C to 100°C) | ≤15min (20°C to 100°C) | ≤15min (20°C to 100°C) |
| Cooling Speed | natural cooling | ≤30min (R.T. decreases 20°C) @R.T.26°C | ≤30min (R.T. decreases 20°C) @R.T.26°C | fan cooling | natural cooling |
| Heating Cover | no | no | with | no | with |
| Time Range | 1sec~999sec or 1min~999min | 1sec~999sec or 1min~999min | 1sec~999sec or 1min~999min | 1sec~999sec or 1min~999min | 1sec~999sec or 1min~999min |
| Voltage | DC24V adapter | DC24V adapter | DC24V adapter | DC24V adapter | DC24V adapter |
| Power | 60W | 120W | 120W | 60W | 60W |
| Dimension | W.110 x D.156 x H.92mm | W.110 x D.156 x H.103mm | W.110 x D.156 x H.108mm | W.110 x D.156 x H.103mm | W.110 x D.156 x H.97 mm |
| Net Weight | 1kgs | 1.4kgs | 1.4kgs | 1kgs | 1kgs |

Accessories



SMD-A



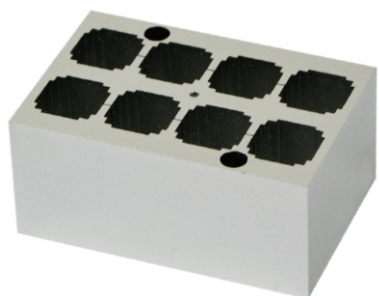
SMD-B



SMD-C



SMD-D



SMD-E



SMD-F



SMD-G

Notice :
MINI-F/MINI-G is not standard block , cover can 't be closed.

Specification

| Cat# | Spec | Dia. of hole | Hole bottom shape | Block dimension |
|-------|-------------|-------------------------------------|-------------------|-----------------|
| SMD-A | 0.2 ml x 40 | 6.1 mm | Cone bottom | 71 x 47 x 32 mm |
| SMD-B | 0.5 ml x 24 | 8 mm | Cone bottom | 71 x 47 x 32 mm |
| SMD-C | 1.5 ml x15 | 10.8 mm | Cone bottom | 71 x 47 x 32 mm |
| SMD-D | 2.0 ml x 15 | 10.8 mm | Round bottom | 71 x 47 x 32 mm |
| SMD-E | cuvette x 8 | 8~12.5 mm(Maximum edge length 15mm) | No bottom | 71 x 47 x 32 mm |
| SMD-F | 15ml x 4 | 16.9mm | Flat bottom | 71 x 47 x 82 mm |
| SMD-G | 50 ml x 2 | 29.2mm | Flat bottom | 71 x 47 x 82 mm |