

STALWART

Horizontal Gel Electrophoresis SGE-30



Introduction

Horizontal Gel Electrophoresis is a one-body electrophoresis Unit, which has compact design, stable performance, easy operation and good reproducibility and cost performance. It is widely used in chemical field, ideal for teaching, scientific research, food and medical treatment. Horizontal gel electrophoresis unit is mainly used for separation and test of nucleic acid.

Features

- New and unique appearance, mini and portable; The electrophoresis tank and power can be separated.
- The cover with safety design, flip cover immediately power off, to ensure safety; Transparent cover and open hole design, easy to heat dissipation and observation;
- Top handle design, easy to pick and place.
With seven output voltages, it can be called with one button, which is convenient and fast, saving standby consumption.
- Specially designed Electrophoresis shape, reducing the temperature difference between the buffer, while the heat benefit is improved. Put the gel into a limited position without drift.
- With the pause function, timing function, can leave after press the start button, with Alarm function, buzzer alert at the end.
Highlight digital tube displays the set parameters, default remember the output voltage and time Settings of the previous operation.
When the electrophoresis current exceeds the peak current, will automatically adjust the voltage to reduce the current value, improve the experimental reproducibility.
Equipped with variety of specifications of gel trays / combs, compatible with a variety of experimental needs, compatible with high-throughput electrophoresis and multi-channel pipette operation.

Specification

Item	SGE-30
Capacity	Max.500ml
Inner diameter dimension	W.150×D.150×H.47mm
Multi-channel suitability	Suitable for multi-channel pipettor
Timing function	1min~99h59min or continue, with pause function
Security Settings	The power is automatically paused when the cover is lifted
Storage function	Automatically memorize the previous operating voltage and time
Input power	AC110V, 50/60Hz
Output voltage	Constant peak voltage (140V) , impulse control
Dimensions	W.260×D.170×H.68mm
Optional output voltage	135V 100V 70V 50V 35V 25V 18V
Net weight	0.78kgs

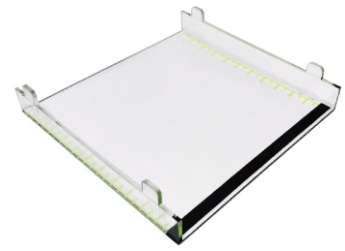
Accessories



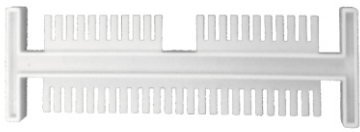
SGE-A



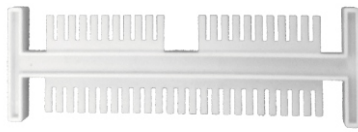
SGE-B



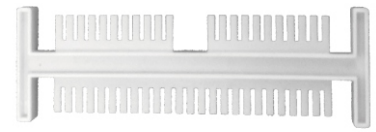
SGE-C



SGE-D



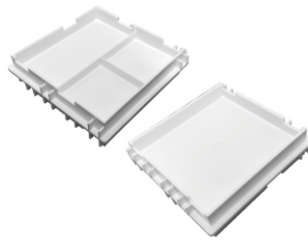
SGE-E



SGE-F



SGE-G



SGE-H

Cat#	Description	Specifications/Dimensions	Quantity
SGE-A	Small size plate for gel	60mm(W)×60mm(L)	2
SGE-B	Medium size plate for gel	120mm(W)×60mm(L)	1
SGE-C	big size plate for gel	120mm(W)×120mm(L)	1
SGE-D	Gel Comb 1	1.0mm thickness 25/11 teeth (Can used multichannel gun to add sample)	4
SGE-E	Gel Comb 2	1.5mm thickness 18/8 teeth	1
SGE-F	Gel Comb 3	1.5mm thickness 13/6 teeth	1
SGE-G	Gel Comb 4	2.0mm thickness 3/2 teeth	1
SGE-H	Base for gel making (double side)	138mm(W)×138mm(L)×36mm(H)	1