

STALWART

Dual temperature control dry bath Incubator SDT-100 Series



SDT-100D,T,I

Introduction

Dual temperature control dry bath incubator is a microcomputer controlled constant temperature dry bath device, high temperature control accuracy, good parallelism of sample preparation, to replace the traditional water bath device, can be widely used in sample preservation and reaction, DNA amplification and electrophoresis pre-denaturation, serum coagulation and so on. Application industry throughout the pharmaceutical, chemical, food safety, quality testing, environment and so on.

Features

- Unique dual temperature control slot can individually control temperature to make sure non interference. One equipment to meet the demands for more experiments.
- OLED display, simple interface, double time and temperature setting, simultaneous temperature and diminishing time display. Fast heating speed, uniform heating, accurate temperature control, high stability, low energy consumption and no noise.
- Built in temperature calibration function, automatic fault detection and buzzer alarm function.
- Built in over-temperature protection device, safe and reliable, enhance the service life of the machine.
- Product designed compact and tight, occupied little space. Using freer and easier.
- Various blocks for convenient replacement, easy for cleaning and disinfection.
- Perfect high block sealing cartridge with cover can make 15 / 50ml high block totally enclosed with dry bath.

Specification

Item	SDT-100C	SDT-100D	SDT-100I
Temp. Control Range	-10°C~105°C	R.T.+5°C~105°C	Heating: R.T.+5°C ~105°C Cooling:-10°C ~105°C
Temp. Setting Range	-10°C~105°C	5°C~105°C	Heating: 5°C ~105°C Cooling:-10°C ~105°C
Temp. Max. Decrease	R.T. decreases 25°C @R.T. 26°C	/	Cooling: R.T. decreases @R.T. 26°C
Temp. Stability@100°C	±0.5°C	±0.5°C	±0.5°C
Temp. Stability@40°C	0.3°C	0.3°C	0.3°C
Block Temp. Uniformity	±0.3°C	±0.3°C	±0.3°C
Temp. Display Accuracy	0.1°C	0.1°C	0.1°C
Heating Speed	≤15min (20°C to 100°C)	≤15min (20°C to 100°C)	≤15min (20°C to 100°C)
Max. temp.	105°C	105°C	105°C
Cooling Speed	≤25min (R.T. decrease 25°C)@R.T.26°C	/	≤25min (R.T. decrease 25°C) @R.T.26°C
Time Range	1min ~99h59min or continuous	1min~99h59min or continuous	1min ~99h59min or continuous
Voltage	AC 90~ 230V, 50/60Hz	AC 220V/AC 110V, 50/60Hz	AC 220V / AC 110V, 50/60Hz
Power	200W	150W	170W
Fuse	250V,2A/4A, Φ5×20	250V,2A/4A, Φ5×20	250V,2A/4A, Φ5×20
Dimension (WxDxH)	W.240 x D.260 x H.168mm	W.240 x D.260 x H.168mm	W.240 x D.260 x H.168mm
Net Weight	3.0kgs	2.6kgs	2.6kgs

Accessories



SDT-A



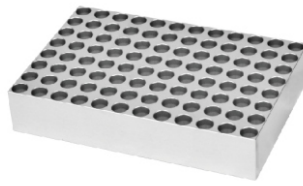
SDT-B



SDT-C



SDT-D



SDT-E



SDT-F



SDT-G



SDT-HH High Block Holder
(Suitable for block SDT-F & SDT-G)



BT-SC Standard Transparent
Cover(Suitable for Block
SDT-A to SDT-E)



SDT-HC High Module Transparent
Cover(Suitable for SDT-F/SDT-G
High Module Insulation Cover)

Specification

Cat#	Dia. of hole	Spec	Quantity of tube	Quantity can be Accommodated
SDT-A	6.1mm	0.2ml tube	24x0.2ml	8 pieces
SDT-B	8mm	0.5ml tube	12x0.5ml	8 pieces
SDT-C	10.8mm	1.5ml tube	6x1.5ml	8 pieces
SDT-D	10.8mm	2.0ml tube	6x2.0ml	8 pieces
SDT-E	6.1mm	0.2ml tube/96-well PCR plate	96x0.2ml	2 standard PCR plates
SDT-F	16.9mm	15ml tube	6x15ml	4 pieces
SDT-G	29.2mm	50ml tube	3x 50ml	4 pieces
SDT-H	Customized	Customized	Customized	Customized