

STALWART

Dry Bath Incubator SDB-200 Series



SDB-2001



SDB-2002



SDB-2002A



SDB-2004

Introduction

Dry Bath Incubator with high precision of temperature control. It is good for sample preparation parallelism. And it is used as an alternative to the traditional water bath devices. It is widely used in the cultivation, preservation and reaction of various samples. Its applications of industry include pharmaceutical, chemical, food safety, environment, quality inspection, etc.

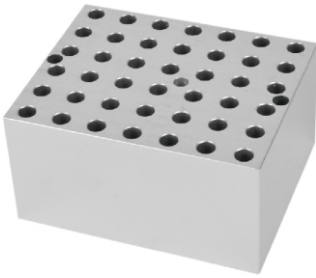
Features

- Fast heating speed, uniform heating, accurate temperature control, high stability, low energy consumption and no noise.
- Built-in temperature deviation calibration function, automatic fault detection and buzzer alarm function.
- Built in over-temperature protection device, safe and reliable, enhance the service life of the machine.
- Product designed compact and tight, occupied little space, free and easy.
- Continuous operation is optional. Various blocks for convenient replacement, easy for cleaning and disinfection.
- SDB-2002A can achieve independent heating and incubating, unique two for one design, meet more lab requirements.

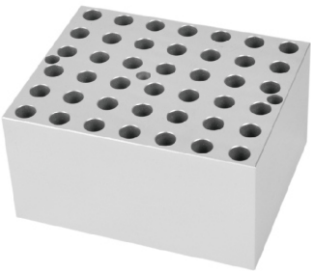
Specification

Item	SDB-2001	SDB-2002	SDB-2003	SDB-2004
Temp.Control Range	R.T.+5°C~150°C	R.T.+5°C~150°C	R.T.+5°C~150°C	R.T.+5°C~120°C
Temp.Setting Range	5°C~150°C	5°C~150°C	5°C~150°C	5°C~120°C
Time Range	1min~99h59min	1min~99h59min	1min~99h59min	1min~99h59min
Temp.Stability @40~100°C	±0.5°C	±0.5°C	±0.5°C	±0.5°C
Temp.Stability @>100°C	±1°C	±1°C	±1°C	±1°C
Block Temp.Uniformity @40°C	±0.3°C	±0.3°C	±0.3°C	±0.3°C
Block Temp.Uniformity @>100°C	±0.5°C	±0.5°C	±0.5°C	±0.5°C
Temp.Display Accuracy	0.1°C	0.1°C	0.1°C	0.1°C
Heating Speed	≤30min(20°C to 150°C)	≤30min(20°C to 150°C)	≤30min(20°C to 150°C)	≤30min(20°C to 120°C)
Sample Capacity	1 standard block	2 standard block	2 block individually control	4 standard blocks
Voltage	AC 220V/AC 110V, 50/60Hz	AC 220V/AC 110V, 50/60Hz	AC 220V/AC 110V, 50/60Hz	AC 220V/AC 110V, 50/60Hz
Power	200W	400W	400W	600W
Fuse	250V,2A/3A, Φ5x20	250V,3A/6A, Φ5x20	250V,3A/6A, Φ5x20	250V,5A/10A, Φ5x20
Dimension	W.200 x D.230 x H.95mm	W.220 x D.260 x H.95mm	W.290 x D.260 x H.95mm	W.220 x D.360 x H.95mm
Net Weight	2.6kgs	3.3kgs	3.3kgs	4.7kgs

Accessories



SDBO1



SDBO2



SDBO3



SDBO4



SDBO5



SDBO6



SDBO7



SDBO8



SDBO9



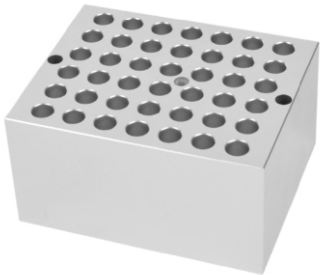
SDB10



SDB11



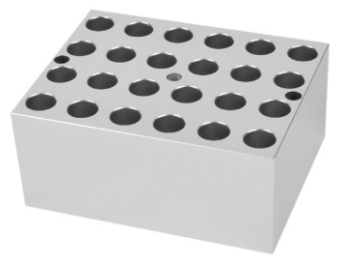
SDB12



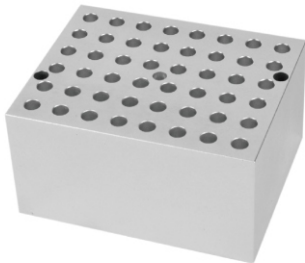
SDB13



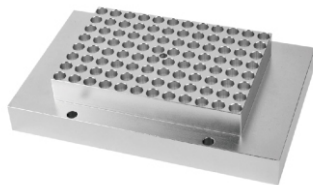
SDB14



SDB15



SDB16



SDB17



SDB18

Specification

Cat#	Spec	Dia. of hole	Hole Bottom Shape	Block Dimension
SDB01	6 mm x 42	6.5 mm	Round bottom	95.5 x 76.5 x 50 mm
SDB02	7 mm x 42	7.5 mm	Round bottom	95.5 x 76.5 x 50 mm
SDB03	10 mm x 20	10.5 mm	Round bottom	95.5 x 76.5 x 50 mm
SDB04	12 mm x 20	12.5 mm	Round bottom	95.5 x 76.5 x 50 mm
SDB05	13 mm x 20	13.5 mm	Round bottom	95.5 x 76.5 x 50 mm
SDB06	15 mm x 12 (7ml Centrifuge tube)	15.5 mm	Round bottom	95.5 x 76.5 x 50 mm
SDB07	16 mm x 12 (10ml/15ml Centrifuge tube)	16.5 mm	Round bottom	95.5 x 76.5 x 50 mm
SDB08	19 mm x 12	19.5 mm	Round bottom	95.5 x 76.5 x 50 mm
SDB09	20 mm x 6	20.5 mm	Round bottom	95.5 x 76.5 x 50 mm
SDB10	26 mm x 6	26.5 mm	Round bottom	95.5 x 76.5 x 50 mm
SDB11	28 mm x 4 (50ml Centrifuge tube)	28.5 mm	Flat bottom	95.5 x 76.5 x 50 mm
SDB12	40 mm x 2	40.5 mm	Round bottom	95.5 x 76.5 x 50 mm
SDB13	0.5 ml x 42	8 mm	Cone bottom	95.5 x 76.5 x 50 mm
SDB14	1.5 ml x 24	10.8 mm	Cone bottom	95.5 x 76.5 x 50 mm
SDB15	2.0 ml x 24	10.8 mm	Round bottom	95.5 x 76.5 x 50 mm
SDB16	0.2 ml x 48	6.1 mm	Cone bottom	95.5 x 76.5 x 50 mm
SDB17	0.2 ml x 96	6.7 mm	Cone bottom	95.5 x 153.5 x 33.5 mm
SDB18	Flat bottom plates	Top size 76 x 116 x 4 mm	Flat plate block	95.5 x 153.5 x 22.5 mm