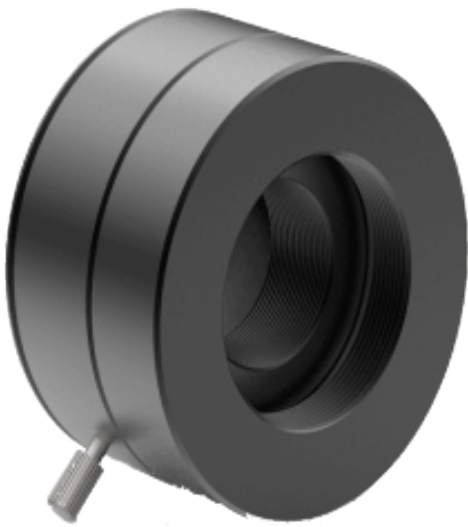


STALWART

C-mount Adapters SCF0.5x-C & SCF0.66x-C



SCF0.5x-C



SCF0.66x-C

Description

SCF0.5x-C and SCF0.66x-C C-mount adapters are used to connect C-mount cameras to microscope's 1× C-mount and make the digital camera's FOV match the eyepiece's FOV very well. The main feature of these adapters is the focus is adjustable, so the images from digital camera and the eyepieces can be synchronous.

SCF0.5x-C and SCF0.66x-C adapters include 0.5× and 0.66× built-in reducing lens respectively. 0.5× adapters are fit for 1/3", 1/2.5", 1/2.3" image sensors. 0.66× adapters are fit for 1/2", 1/1.8" and 2/3" image sensors.

Specification

Model	C-mount	Magnification	Adaptive	Application
SCF0.5x-C adapter	Yes	0.5×	C-mount(25.4mm)	Used to connect C-mount camera to microscope's 1× C-mount
SCF0.66x-C adapter	Yes	0.66×	C-mount(25.4mm)	Used to connect C-mount camera to microscope's 1× C-mount